

GSN

GEOLOGICAL SURVEY OF NAMIBIA

A member of the Organisation of African Geological Surveys

GEOLOGICAL SURVEY OF NAMIBIA

**Welcome to all delegates of the
7th Conference of the
African Association of Woman
in Geosciences**



by

Dr Gabi Schneider

DIRECTOR

GEOLOGICAL SURVEY OF NAMIBIA



EARTH SCIENCES FOR NAMIBIA'S SUSTAINABLE DEVELOPMENT

GSN

GEOLOGICAL SURVEY OF NAMIBIA

A member of the Organisation of African Geological Surveys

THE MINISTRY OF MINES AND ENERGY

The Ministry of Mines and Energy comprises 5 Directorates, namely the Directorate of Mines, the Directorate of Energy, the Directorate of the Geological Survey of Namibia, the Directorate of Diamond Affairs and the Directorate of Administration and Finance.

Centrally located in Windhoek, it houses information about some 100 years of exploration in Namibia, modern geological, geophysical and geochemical data; and provides licensing services, and thereby promotes exploration and mining through the services of a vibrant Geological Survey and the Directorate of Mining's efficient administration of modern mining legislation..



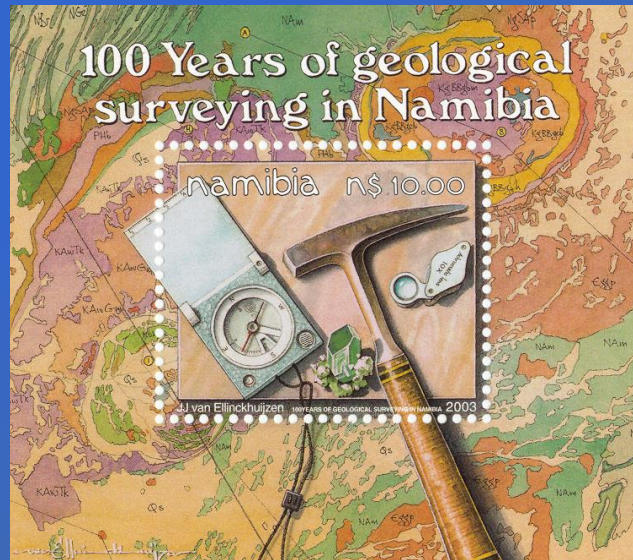
EARTH SCIENCES FOR NAMIBIA'S SUSTAINABLE DEVELOPMENT

MISSION STATEMENT

The Geological Survey of Namibia as the National Institute for Earth Science and Mineral Resources is entrusted with management and research of one of our most important assets – the earth in which our life support system is rooted. Our mission is to enhance knowledge and awareness of Namibia’s geological resources. Through scientific investigation as well as application and dissemination of quality research data we are facilitating the search for and the assessment of mineral resources, geological engineering and land use planning and sustainable development with due regard to the environment.



1903-2003



INTERNATIONAL COOPERATION AND RESEARCH

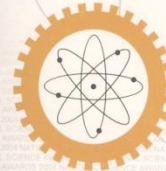
- International Union of Geological Sciences
- International Consortium of Geological Surveys
- Organisation of African Geological Surveys
- Commonwealth Geological Survey's Forum
- SADC Geology Subcommittee
- Chair of SADC Environmental Subcommittee

National Science Awards 2004



This Certificate is Awarded to
Geological Survey

In the Overall Category of
Research Organisation of The year



Signed: _____

Hon. Nahas Angula
Minister of Higher Education,
Training and Employment Creation



Ministry of Higher Education,
Training & Employment Creation



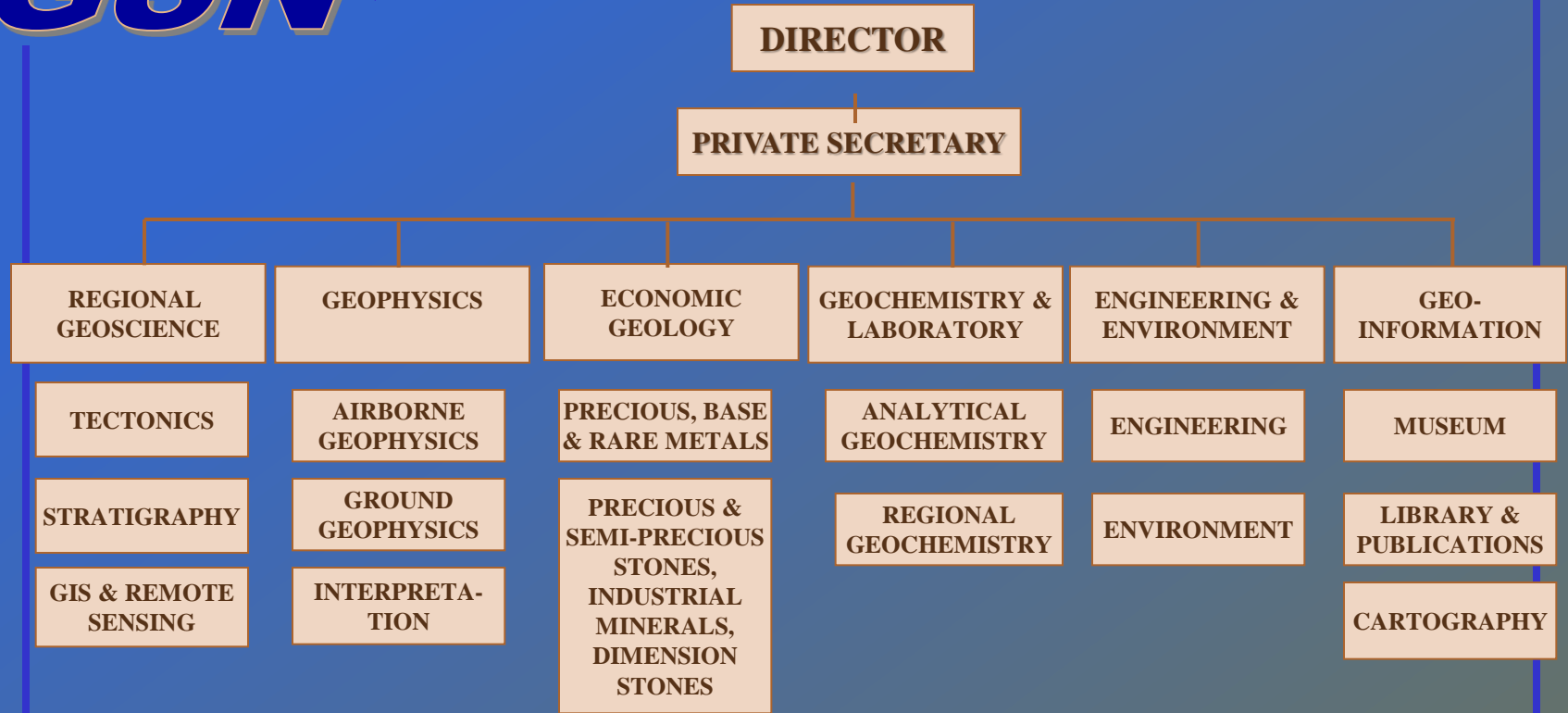
Skorpion Zinc

A member of the Anglo American plc group

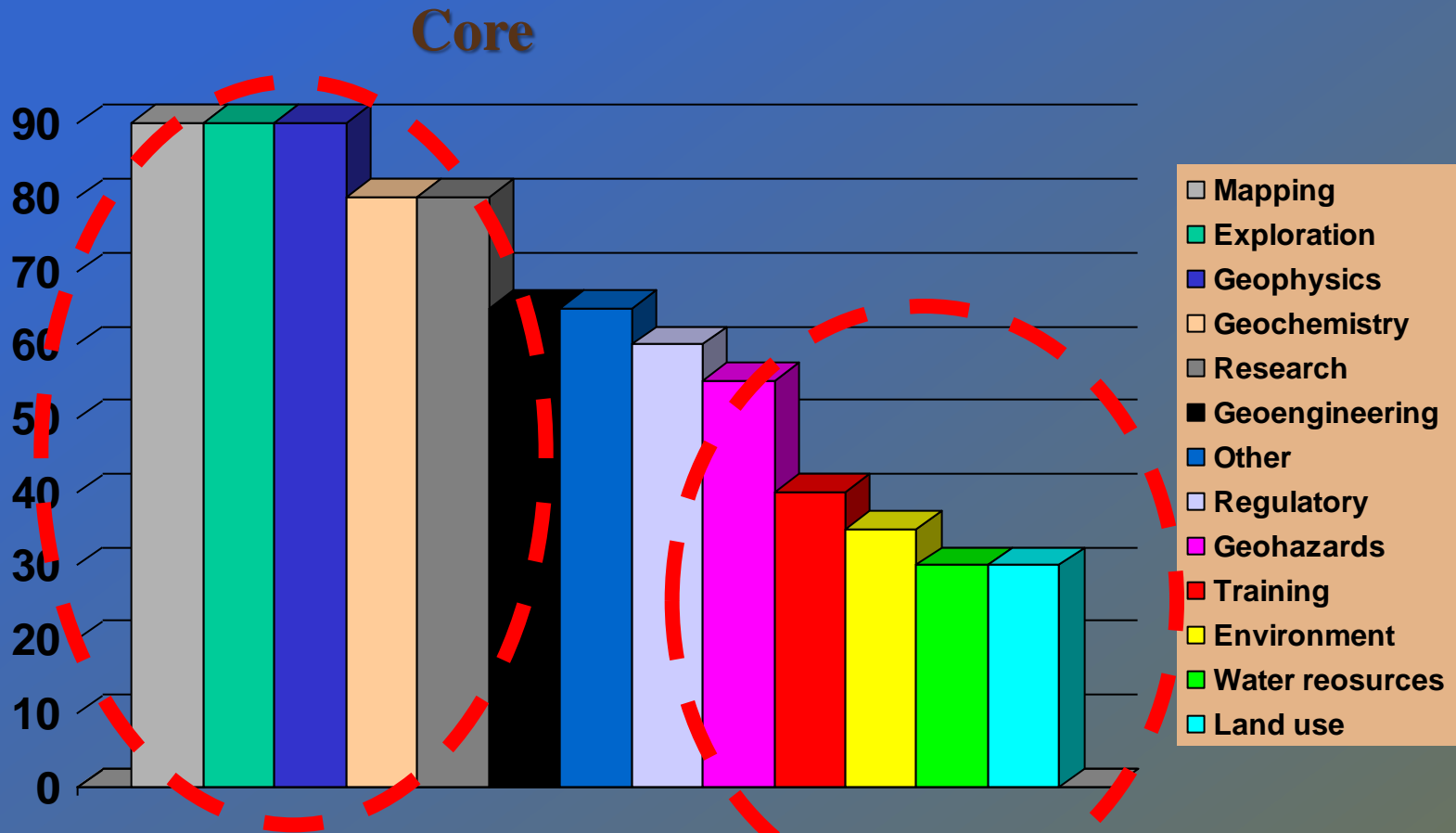


GEOLOGICAL SURVEY OF NAMIBIA

A member of the Organisation of African Geological Surveys



EARTH SCIENCES FOR NAMIBIA'S SUSTAINABLE DEVELOPMENT



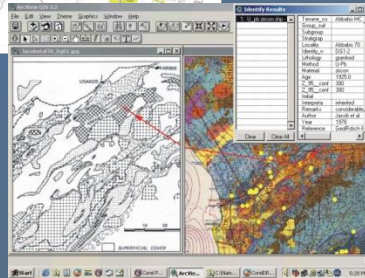
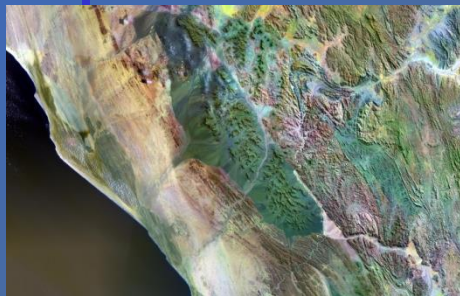
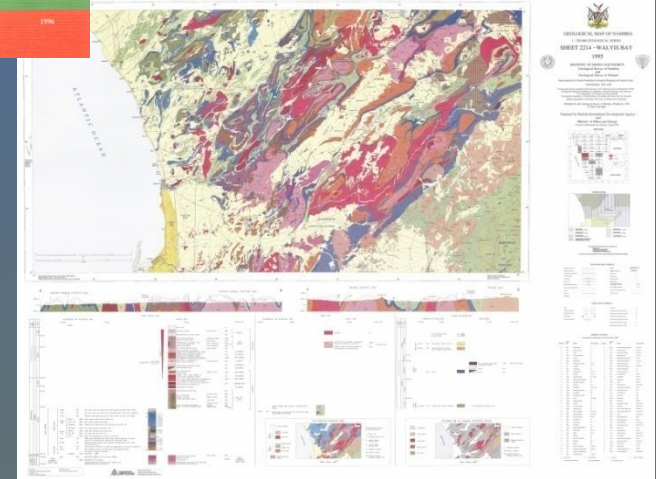
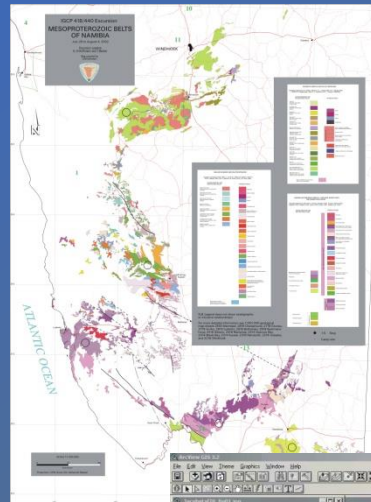
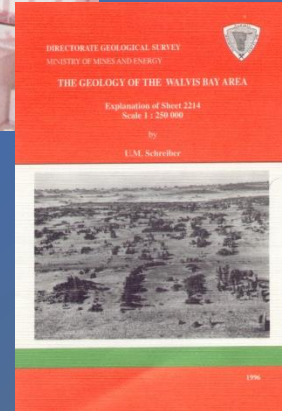
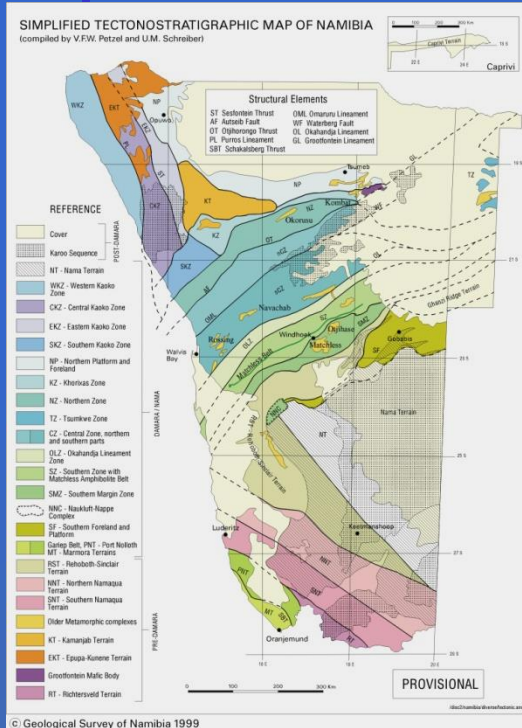
Source: OAGS survey

GSN

GEOLOGICAL SURVEY OF NAMIBIA

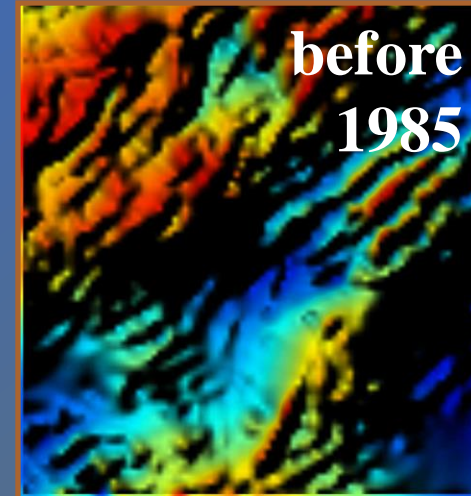
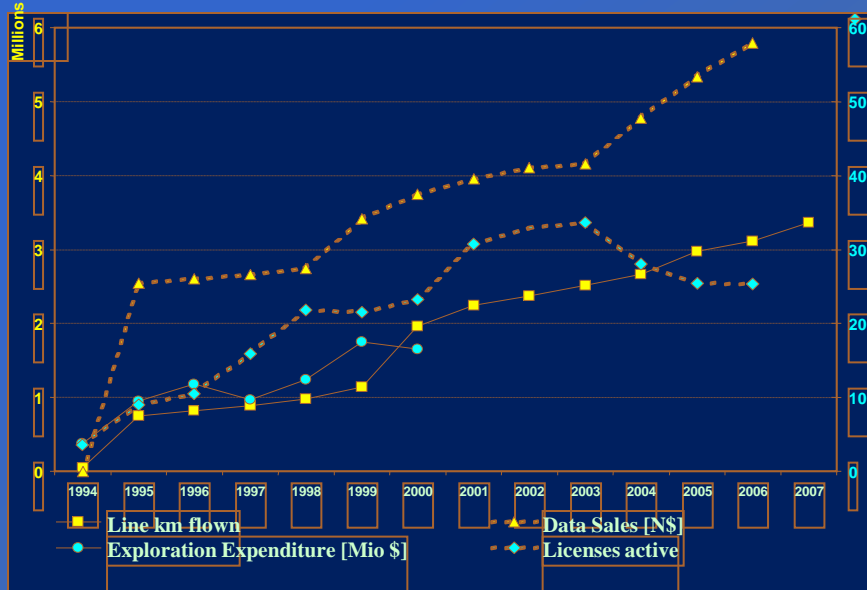
A member of the Organisation of African Geological Surveys

REGIONAL GEOSCIENCE

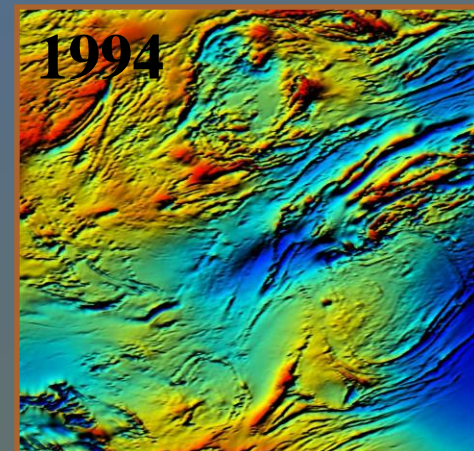


EARTH SCIENCES FOR NAMIBIA'S SUSTAINABLE DEVELOPMENT

GEOPHYSICS



4.4 million line kms - N\$ 155 million



EARTH SCIENCES FOR NAMIBIA'S SUSTAINABLE DEVELOPMENT

GSN

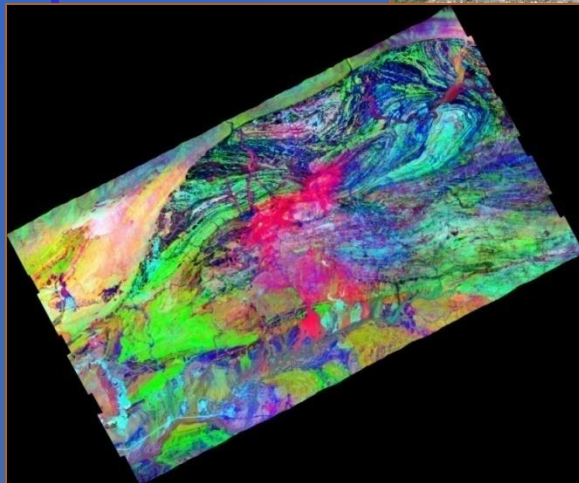
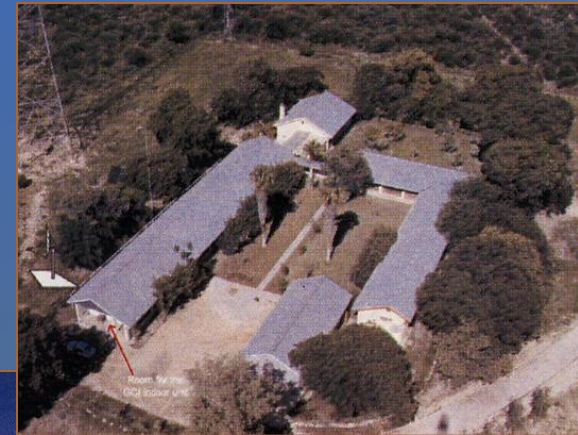
GEOLOGICAL SURVEY OF NAMIBIA

A member of the Organisation of African Geological Surveys

Gravity



GEOPHYSICS



Seismic Stations



CTBTO



Hyper-spectral Surveys

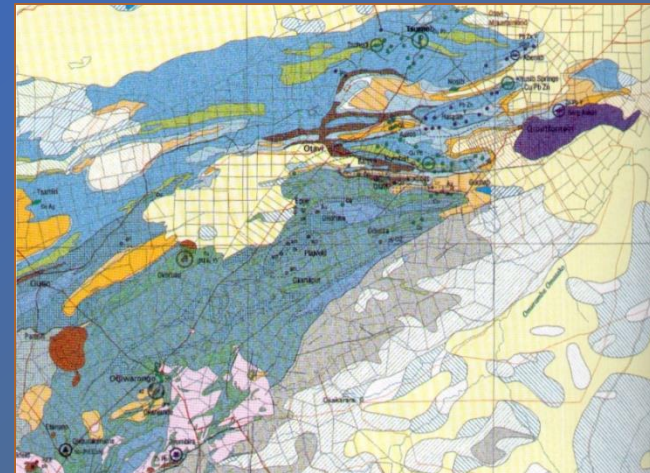
EARTH SCIENCES FOR NAMIBIA'S SUSTAINABLE DEVELOPMENT

GSN

GEOLOGICAL SURVEY OF NAMIBIA

A member of the Organisation of African Geological Surveys

ECONOMIC GEOLOGY

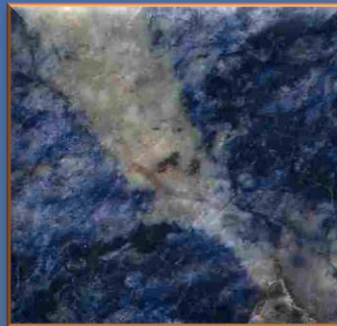


Earth Data Namibia

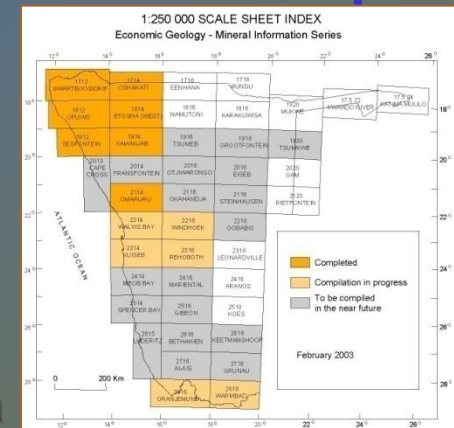
Mineral Map + Information Series



Corestore



Project Information



EARTH SCIENCES FOR NAMIBIA'S SUSTAINABLE DEVELOPMENT

GEOCHEMISTRY



XRD

**Portable
XRF**



ICP



XRF



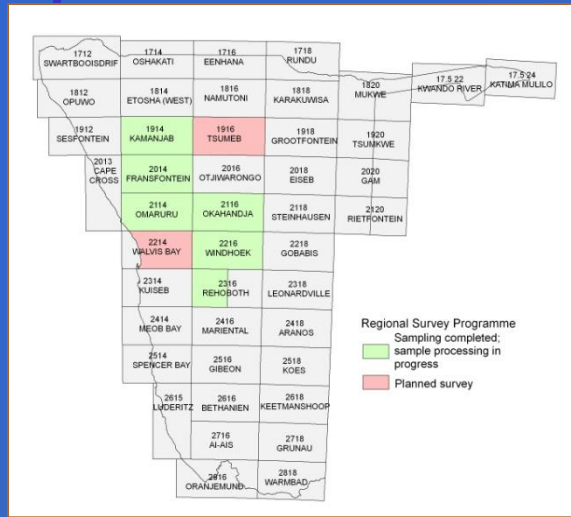
Thin sections



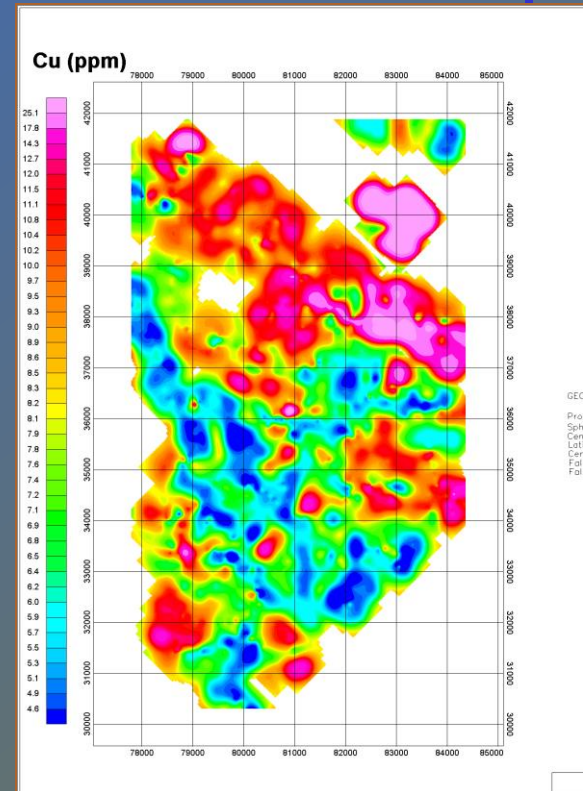
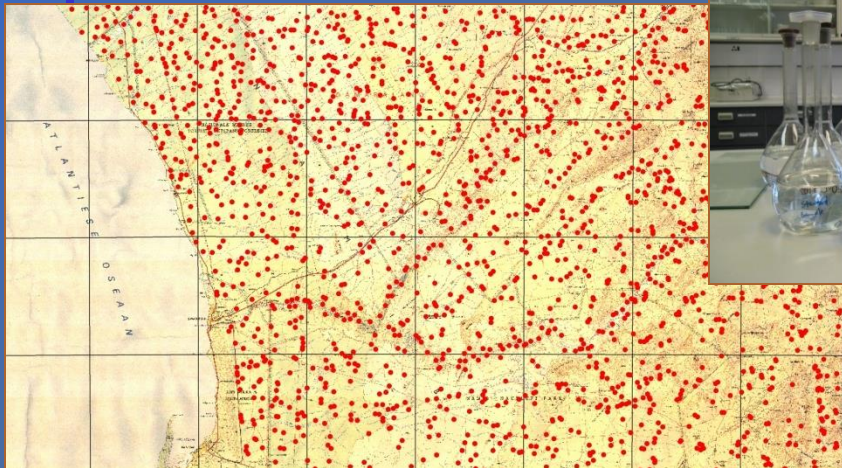
Sample preparation



GEOCHEMISTRY



Regional Geochemical Survey



ENGINEERING AND ENVIRONMENT



Monitoring of current and abandoned mines and waste disposal sites



Infrastructure development Materials testing

STRATEGIC ENVIRONMENTAL ASSESSMENT OF THE NAMIB URANIUM RUSH

Analyse environmental,
economic + social aspects
of uranium exploration
and mining

Assess cumulative,
synergistic and
antagonistic impacts

Formulate and balance
development options

Provide recommendations in
the form of a Strategic
Management Plan (SEMP)
for sustainable development

- ✦ Voluntary SEA
- ✦ First ever SEA for a mineral province
- ✦ Integrated SEA

SMALL SCALE MINING

- ◆ Taylor-made assistance
- ◆ Interpretation of geological data
- ◆ Alternative resources
- ◆ Training
- ◆ Value-adding
- ◆ Marketing



Cutting polishing and value adding



Marketing

Alternative building materials



GSN

GEOLOGICAL SURVEY OF NAMIBIA
A member of the Organisation of African Geological Surveys

GEOINFORMATION



Museum



Library



Palaentology



Curation

Publications



EARTH SCIENCES FOR NAMIBIA'S SUSTAINABLE DEVELOPMENT

GSN

GEOLOGICAL SURVEY OF NAMIBIA
A member of the Organisation of African Geological Surveys

Geology underlies everything!



THANK YOU!

www.mme.gov.na/www.gsn.gov.na

EARTH SCIENCES FOR NAMIBIA'S SUSTAINABLE DEVELOPMENT