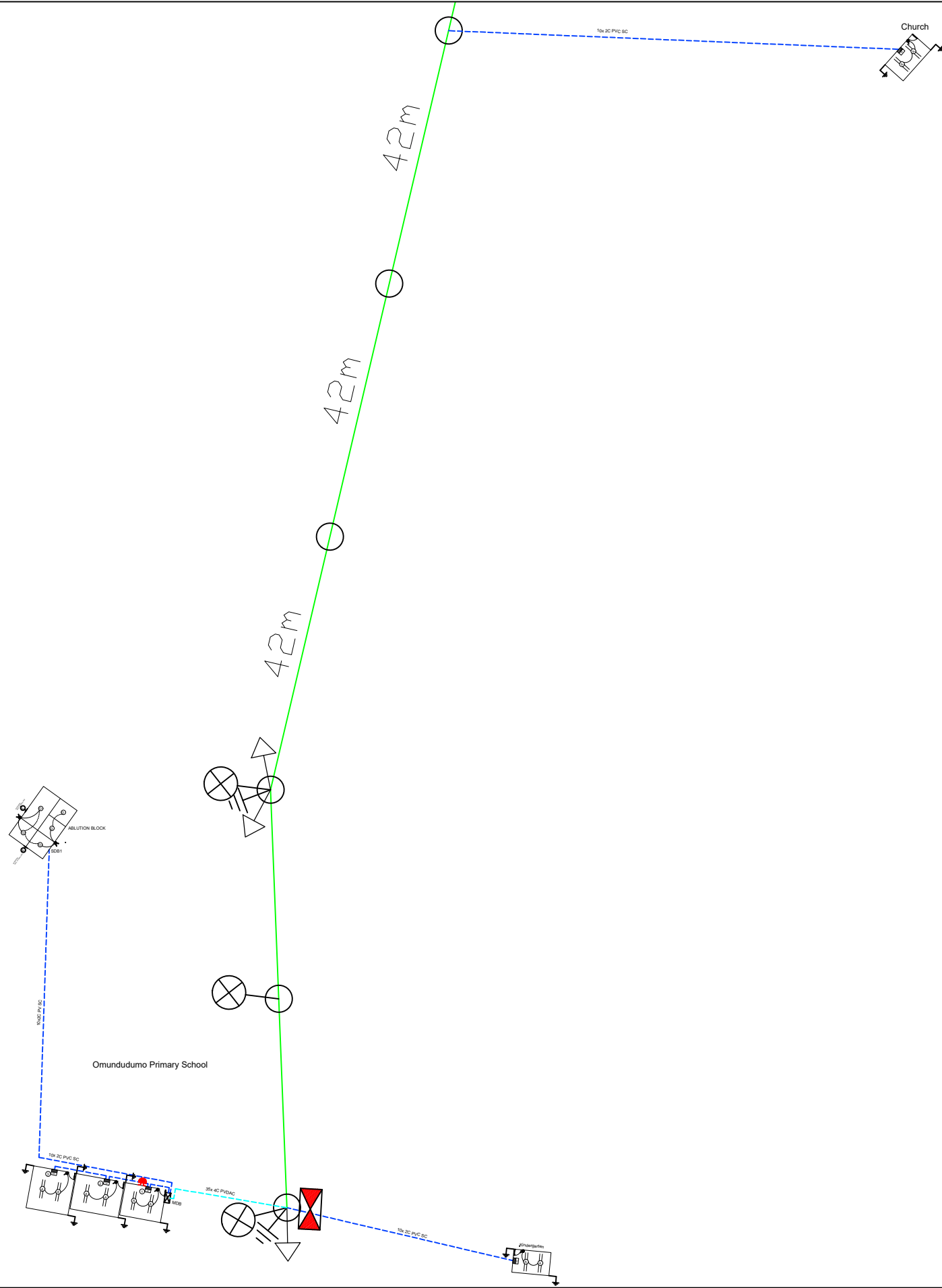
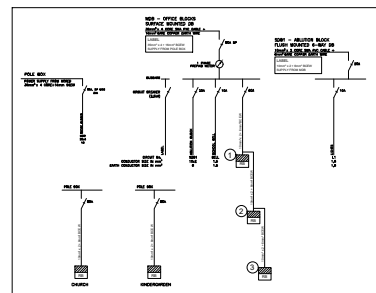


FOR TENDER



LEGEND - LIGHTING

SYMBOL	DESCRIPTION	QTY
(A)	T5 DOUBLE TUBE WATERPROOF FLUORESCENT LIGHT FITTING COMPLETE WITH 2 x 18W LED TUBES (IP65)	10
(B)	OPEN CHANNEL DOUBLE TUBE FLUORESCENT FITTING COMPLETE WITH 2 x 18W LED TUBES	0
(D)	BEKA BULKHEAD SERIES 71 LUMINAIRE RANGE COMPLETE WITH ROUND 2D 9W CFL	5
(E)	BEKA SERIES 34 BULKHEAD LUMINAIRE RANGE COMPLETE WITH 2D 16W CFL	2
(F)	BEKA FLOOD LIGHT COMPLETE WITH 2D 20W CFL	0
(G)	1 LEVER ONE-WAY LIGHT SWITCH MH 1200mm AFFL	7
(L2)	LIGHT CIRCUIT NUMBER	-
(S)	SCHOOL BELL	0
(M)	METERBOARD / MAIN DISTRIBUTION BOARD WALL MOUNTED	1
(---)	UNDERGROUND 16mm x 2 core SERVICE CABLE	
(---)	UNDERGROUND 10mm x 2 core SERVICE CABLE	

LEGEND - POWER

SYMBOL	DESCRIPTION	QTY
(S)	DOUBLE SWITCHED SOCKET OUTLET AT MH 300mm AFFL	0
(E)	EARTHING OF ROOF USING A 16mm DIAMETER 1.5m LONG SOLID COPPER EARTH SPIKE BURIED 1.5m BELOW GROUND LEVEL AND CONNECTED TO THE ROOFSTRUCTURE WITH A 50mm GREEN PVC INSULATED Cu CONDUCTOR, INSTALLED IN A 25mm Ø PVC CONDUIT CHASED INTO BRICKWORK. USE BRASS BOLTS AND LUGS. TERMINATION AT EARTH SPIKE TO BE SEALED WITH DENSO TAPE.	12
(RB)	READY BOARD COMPLETE (WITH DOUBLE-POLE MCB, SURGE ARRESTORS AND EARTH LEAKAGE) INCLUDING LIGHT BULB, GALVANIZED STEEL ROOF (BACK-PLATE), EARTHING AND ALL ACCESSORIES	5

UNLESS OTHERWISE SPECIFIED MH TO BOTTOM OF OUTLET BOXES

No.	REVISIONS	APP.	DATE

CLIENT:
MINISTRY OF MINES AND ENERGY



APPROVED BY CLIENT _____ DATE _____
COPYRIGHT RESERVED

CONSULTANT:
ELECTRICAL CONSULTING ENGINEERS



Box 5324 Maerua Mall Cell: +264 81 129 5242
Ausspannplatz Centaurus Street Fax: 0886531398
NAMIBIA Windhoek vhnarnngongo@gmail.com

PROJECT
**OHANGWENA REGION
RURAL ELECTRIFICATION
2023/2024**

DRAWING TITLE
**OMUNDUDUMO PRIMARY SCHOOL
ELECTRICAL LAYOUT
WIRING OF BUILDINGS**

DESIGNED: DP DRAWN: DP CHECKED: VHN SCALE: NTS
CONSULTANT PROJ. No: ORBIT-OHA-RE-02 DATE: 01/2024
DRAWING No: ORBIT-OHA-ELE-WB-07 REV: 00